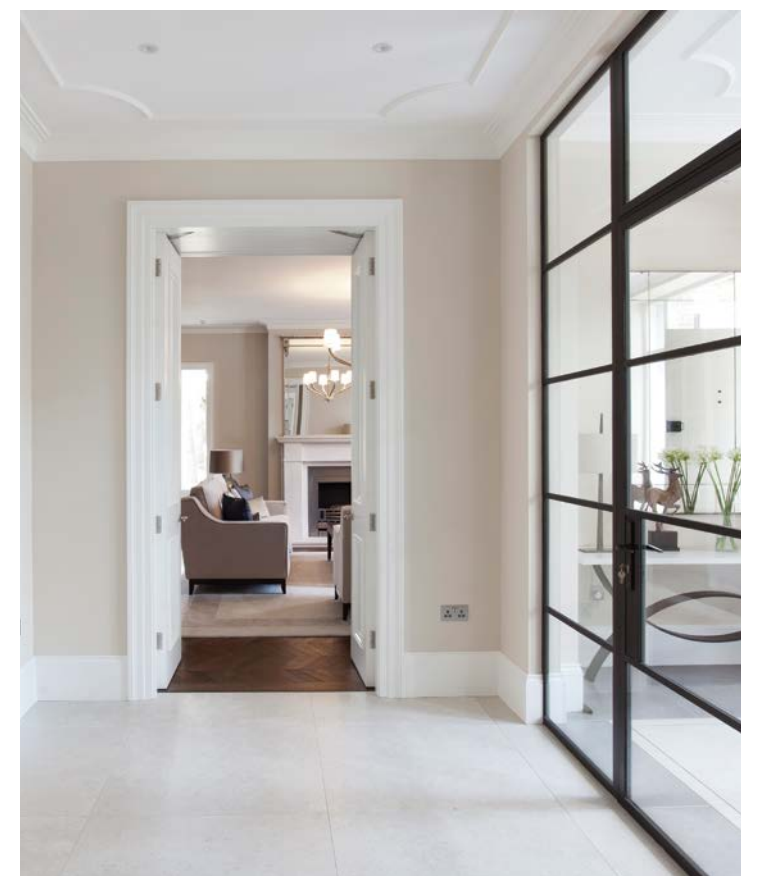




# SEAMLESS SPACES

*The owners of this bespoke new build have created a beautiful home, designed to perfectly reflect their needs for everyday living, entertaining and welcoming their grown-up family*

*Photography INFINITY MEDIA*



The couple wanted to achieve a calming scheme throughout with natural colours in a contemporary yet timeless style. All furniture sourced and supplied by J'Adore Décor; dark oak chevron engineered flooring, Ceco.







‘We were looking to rebuild on the site of our previous home in south Antrim and moved temporarily to rented property in Craigavad to facilitate the build. However, moving to the new location very quickly awakened our interest in the North Down area and we soon realised that moving back was not an option. We were ready for a change and the search for a site commenced. Within a few months we placed a bid on our current site and the slow process to gain planning began.’

Having built before and refurbished an older property, the couple had gained experience from both projects so, this time round, they were focused on getting it right. ‘Previous experience convinced me that when I came to do it again, my choice of architect and builder would be crucial and I wasn’t disappointed; both RPP Architects and MG Construction were fantastic.’

Wanting to achieve a classic yet contemporary design with the interior continuing the theme, the couple worked closely with Simon Robinson and Liz McGeown at RPP Architects. ‘RPP came from a recommendation from a senior business contact working in interior design and fine furnishings in Belfast, who I knew had worked with many different architects in his time. RPP have been amazing. Their experience, knowledge and design ideas made the process not only smooth but also very exciting. It was a bit of an adventure ride to see their drawing board ideas produce the results they could clearly foresee at the outset but produced in us many doubts along the way. These worries were needless in the end and both my wife and I love the home we now have to enjoy. Their attention to detail has struck everyone who enters the house. They provided extensive interior plans for every room and these are largely the plans we went with, some of which pushed us out of our comfort zones. Simon and Liz were inspirational in their technical knowledge, design experience and specification choices where every detail was intentional with an eye for the final result.’

The overall house style was decided after a series of discussions with their architect. ‘Through discussion and design options presented by RPP we went for a Belgian style home using hand-made Belgian brick from Wienerberger. They are called old paepesteen and were described as natural and warm, the feel we were looking for.’ The couple’s project architect, Liz very carefully set out the house to coordinate the unconventional brick sizes with the architectural details – a subtle effect but critical to the overall result. Complementing the Belgian brick walling, intricate zinc detailing and bronze casement windows inset in bespoke hardwood frames enhance the rich finish of this meticulously crafted home. Internally, moulded ceiling features add to the sense of light and space, again enhancing the truly bespoke finish.

The layout has been painstakingly considered to ensure the interior flows organically between spaces, resulting in an inviting and relaxing home where key rooms open effortlessly onto one another. ‘We wanted a classic-contemporary family home that would satisfy our functional needs and at the same time cater for the many return visits of our now grown-up and moved away family of four plus grandchildren. The kitchen was not only at the physical centre of the house but its finishes were a key driver in dictating the look and feel of the rest the house.’

The couple’s interior designer, Jemima of J’Adore Décor was instrumental in designing the harmonious interior schemes throughout. ‘Classic with a contemporary feel was our guiding light for the design brief and both the architect and J’Adore Décor were on the same wavelength. J’Adore Décor were introduced to us by RPP. We very quickly realised that many of our tastes were similar and if not, Jemima was able to accommodate us from her wide knowledge of options. We wanted to use natural contemporary colours and materials throughout. Jemima was fantastic throughout the process and was a critical part of the final product we now call home.’



*Above:* An elegant, more formal look has been created in the dining room. Dining furniture, Harrods; console tables and sideboard, J’Adore Décor.  
*Opposite:* A bespoke table from J’Adore Décor furnishes the welcoming reception hall with bespoke architectural ceiling moulding. Tiling, Ceco.







Central to the design of the house, the bespoke walnut kitchen has an open plan layout perfect for entertaining family and friends. Kitchen, Robinson Interiors; bespoke dining chairs, J'Adore Décor; Molteni dining table, Living Space; floor tiles, Ceko.





Kitchen, Robinson Interiors; bespoke dining chairs, J'Adore Décor; Molteni dining table, Living Space; floor tiles, Ceco.



The furniture in the family room came from the couple's previous home, so this was reupholstered to suit their new calming and muted colour scheme. Dark oak chevron engineered flooring, Ceco.







‘WE WANTED A CLASSIC-CONTEMPORARY FAMILY HOME THAT WOULD SATISFY OUR FUNCTIONAL NEEDS AND AT THE SAME TIME CATER FOR THE MANY RETURN VISITS OF OUR NOW GROWN-UP AND MOVED AWAY FAMILY OF FOUR PLUS GRANDCHILDREN’



*Wine cellar:* The bespoke wine cellar caters for the couple's long-held interest in developing a collection of wines from around the world, where they can store crafted wines in a beautiful and technically perfect environment. *Office:* A fully appointed home office extends off the kitchen as if open plan, where it can be part of the action or closed off as required. Chairs, Bonaldo from Robinson Interiors.





Fully planned interiors formed part of the architect's brief, with a bespoke metal curved staircase taking centre stage.



The master bedroom has been designed with adjacent dressing room, with other accommodation designed to comfortably accommodate the couple's children and grandchildren. Bed, And So To Bed; bespoke ottoman, J'Adore Décor; dressing room; Function Design.



Muted tones create a tranquil ambience in the bathroom with antique mirror adding character and texture. Vanity unit, Function Design; tiles, Ceco; sanitraware, Beggs & Partners.



# INSIGHT

## The owners

**The biggest challenge was** the fact that the site rises over two stories from front to back, so careful setting of the levels was important to marry the house with the outside spaces.

**Our favourite room** and the most popular space in the house is the kitchen! Its such a sociable space, and Robinson Interiors did an amazing job with the bespoke cabinetry.

**The best thing about living here** is the ambience of the property, its elegant practicality and its location close to the shore and to Hollywood.

**My advice is the builder is key...** I could not recommend MG Construction and their staff more highly. I had heard of their reputation and was determined they would build my house.





THE SOUTH-FACING GARDEN PAVILION ANCHORS THE GARDEN WITH THE HOUSE, ITS ARCHITECTURE INSPIRED BY A PAVILION GARDEN RESTAURANT IN RIEMS, OWNED BY ONE OF THE FRENCH CHAMPAGNE HOUSES.

